

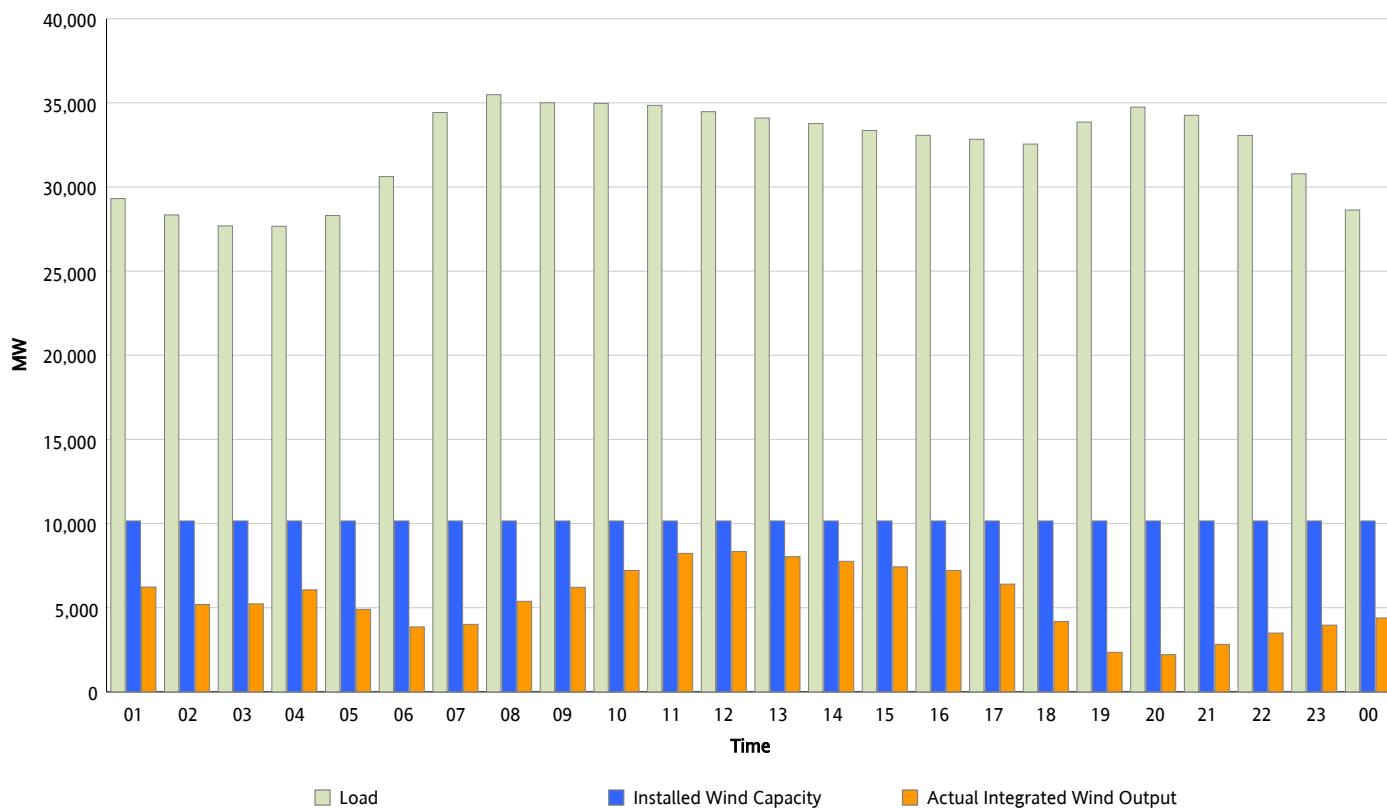


ERCOT Grid Operations

Wind Integration Report : 02/21/2013

Peak Load	35,482 MW
Load Peak Hour (HE)	08
Wind Over Peak	5,380 MW
Wind Record 02/09/13	9,481 MW
Max Wind Value*	8,448 MW
Wind Peak Time	10:39
Wind Integration %	24.28 %

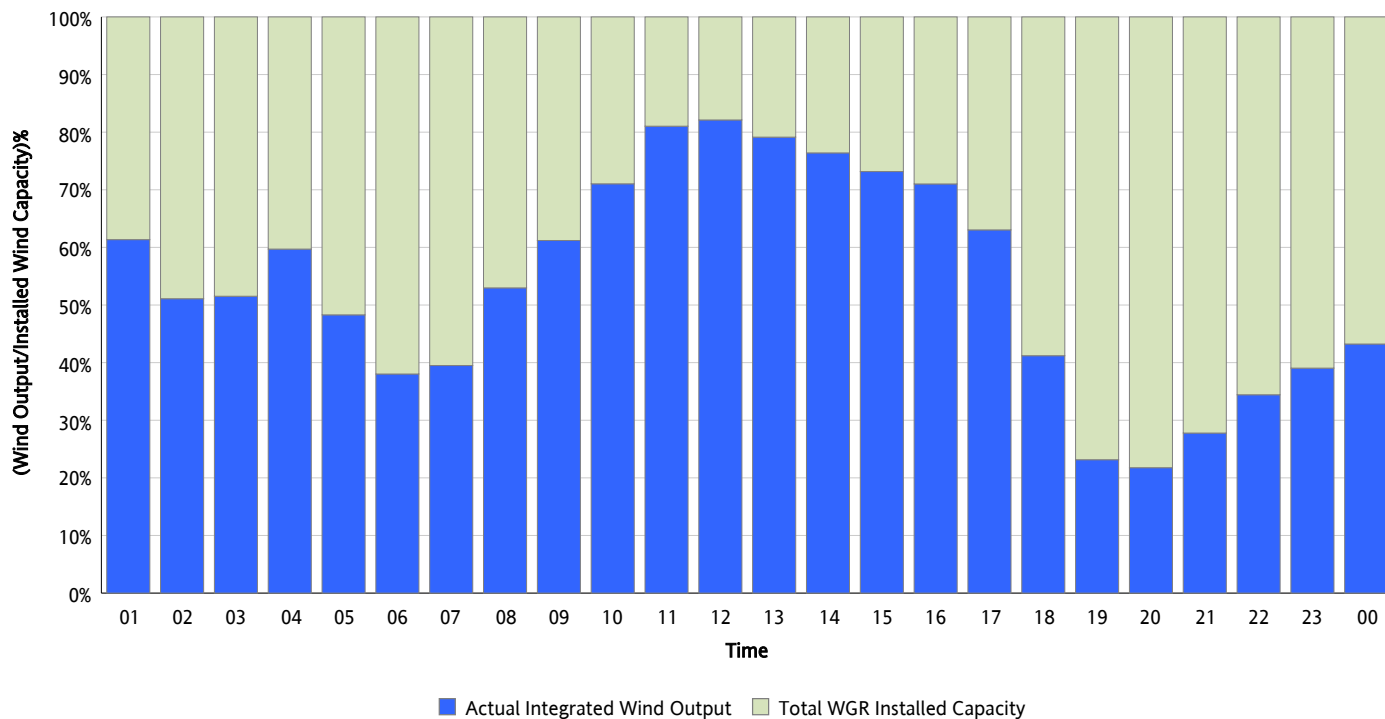
Hourly Average Actual Load vs. Actual Wind Output
02/21/2013



* Wind Record and Wind Max represent instantaneous values and the rest of the values are integrated over the hour

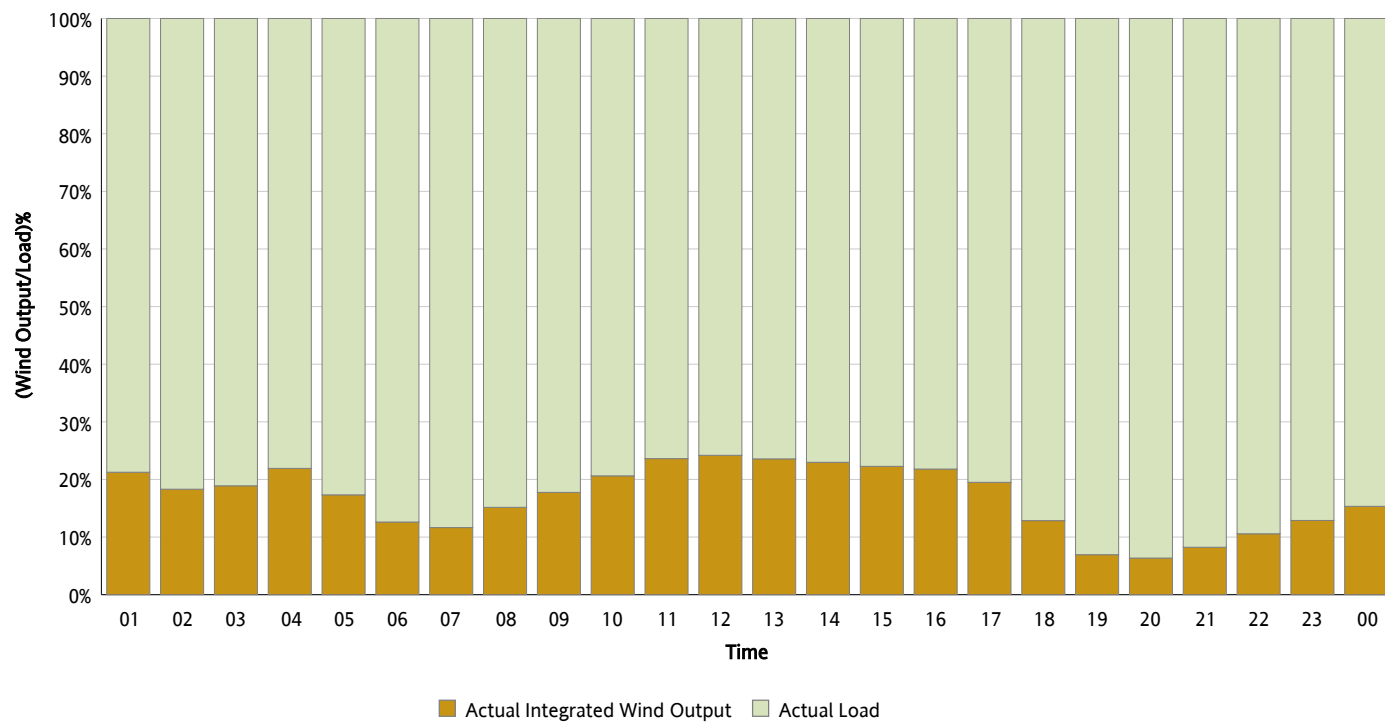
Actual Wind Output as a Percentage of the Total Installed Wind Capacity

02/21/2013



Actual Wind Output as a Percentage of the ERCOT Load

02/21/2013



ERCOT Load vs. Actual Wind Output

02/14/2013 - 02/21/2013

